

The Future-Ready laboratory – Innovating beyond today's challenges with Total Laboratory Automation

Dr. Mamta Soni, MBBS, MD

Chief Of Laboratory Services

Sr. Consultant & HOD Haemat/CP

APOLLO CENTRAL REFERENCE LABORATORY

Chennai

INDIA



Classification of Lab Automation

No single definition but according to the complexity of instruments integration:

- **Analytical Automation** - all analyzers existing as stand-alone machines,
- **Partial Laboratory Automation** - “automation islets”, where laboratory analyzers are interconnected and partially integrated with preanalytical workstations such as in the serum work area, integrating clinical chemistry and immunochemistry testing,
- **Total Laboratory Automation (TLA)** - where most analyzers performing different types of tests (i.e. clinical chemistry, immunochemistry, hematology, hemostasis and so forth) on different sample matrices (e.g. whole blood, serum, heparinized or citrated plasma) are physically integrated as modular systems or connected by assembly lines (e.g. tracks, belts and other types of conveyers).

Why Automation & Digital Solution ?



Objectives to Consider for Technology Gain Automation

Extend Clinical Capabilities



How can I advance the clinical capabilities of my institution to foster innovative concepts of patient care?

Improve Quality of Care



How can I focus my entire operation to improve the outcome for patients?

Standardize



How can I standardize the quality of care provided throughout my institution and across my network?

Attract, Retain, Develop Workforce



How can I manage my operations more efficiently to better leverage my workforce?

Increase Efficiency



How can I manage my processes more efficiently?

Reduce Risk & Liability



How can I better manage my operations to limit the risk of liability?

Burden of Over Head Cost



How can I better manage my operations to reduce my overhead burden?

Improve Profitability



How can I ensure that my organization is financially sustainable?

Stay Competitive



How can I ensure that my operations remain competitive in the long run?

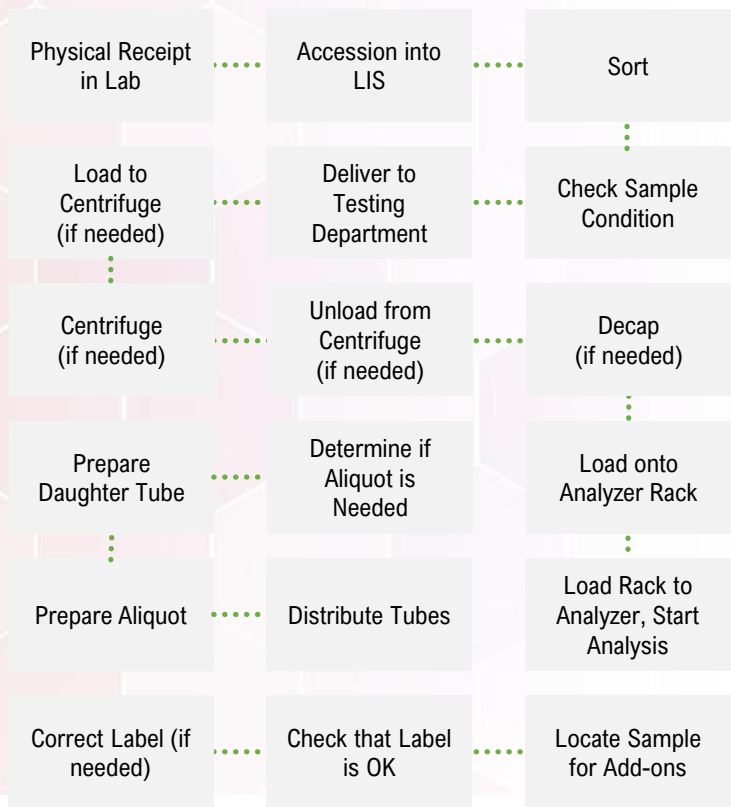
Manage Reputation



How can I ensure that the reputation of my institution positively impacts my business results?

Manual Workflow | The Standard Workflow

Pre-analytical



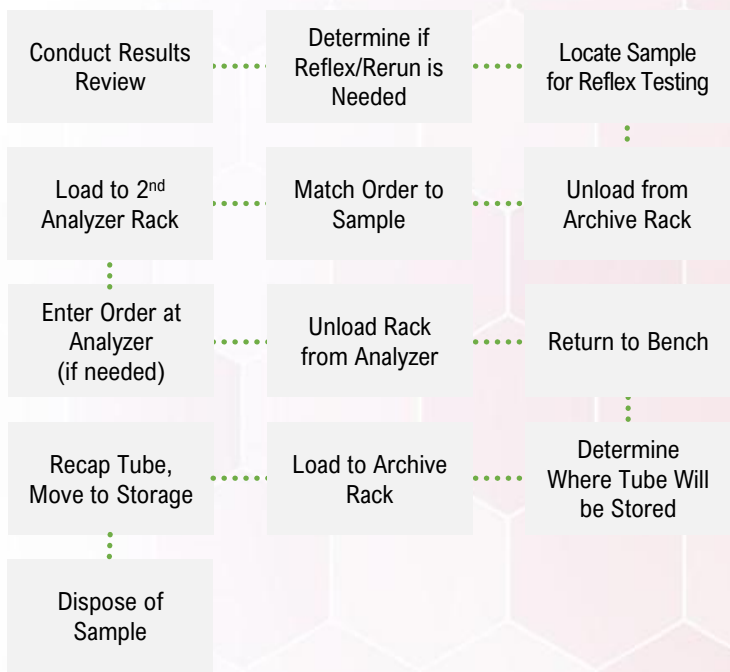
Labor Hours Spent in Phase



Analytical

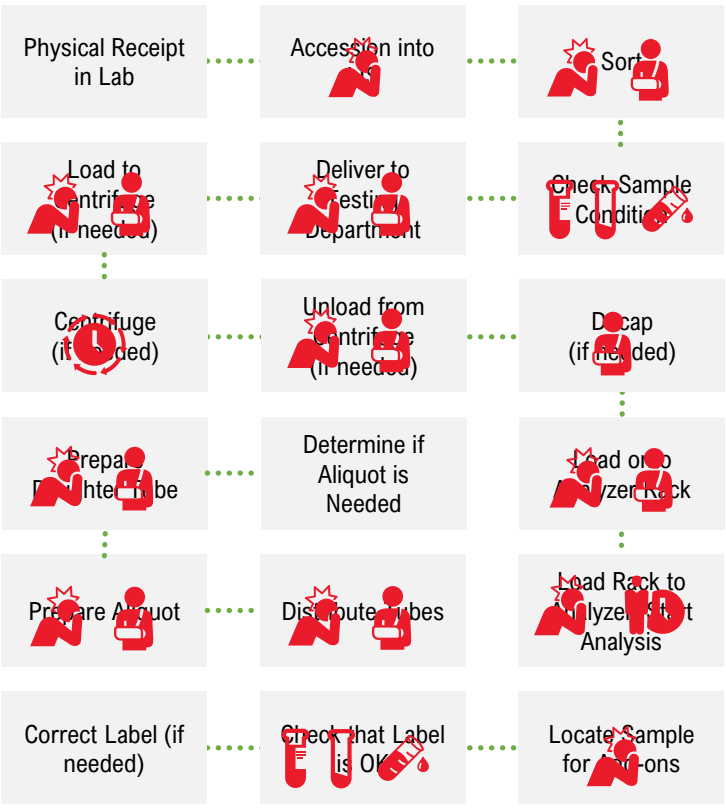


Post-analytical



Potential Risks Along The Sample Processing Continuum

Pre-analytical

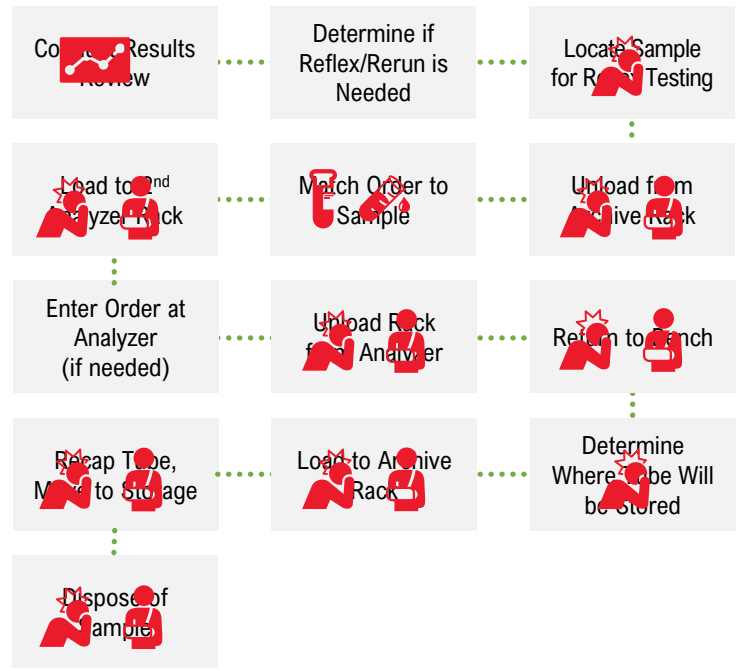


Analytical



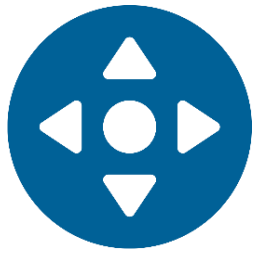
 The more techs **handle tubes,**
the **greater their risk**

Post-analytical



Labor Hours Spent in Phase





Preparing your lab for automation



Preparing Your Lab For Automation

Do you have a standardized process?

Having the process standardized and documented in detail is **CRITICAL** to successful automation

How much of the laboratory process needs to be automated?

The enthusiasm to automate processes can lead to over engineering
Automation of some specialty area's can make process more cumbersome

How frequently does lab process change?

Knowing the areas where frequent changes would occur needs a system with the flexibility to support the process



- ✓ **Standardized lab process**
- ✓ **Giving a flexibility of future lab growth**
- ✓ **Simplify work within your control**

IF YOU Automate JUNK, YOU GET AUTOMATED JUNK

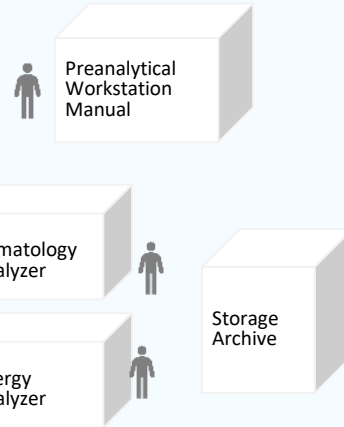
- The first rule of any technology used in a business, is that automation applied to an efficient operation **will magnify the efficiency.**
- The second, is that automation applied to an inefficient operation **will magnify the inefficiency.**
- **Bill Gates**
Founder of Microsoft Corporation



Step By Step : Leverage Technology To Eliminate Bottleneck-Journey of Continuous Improvement

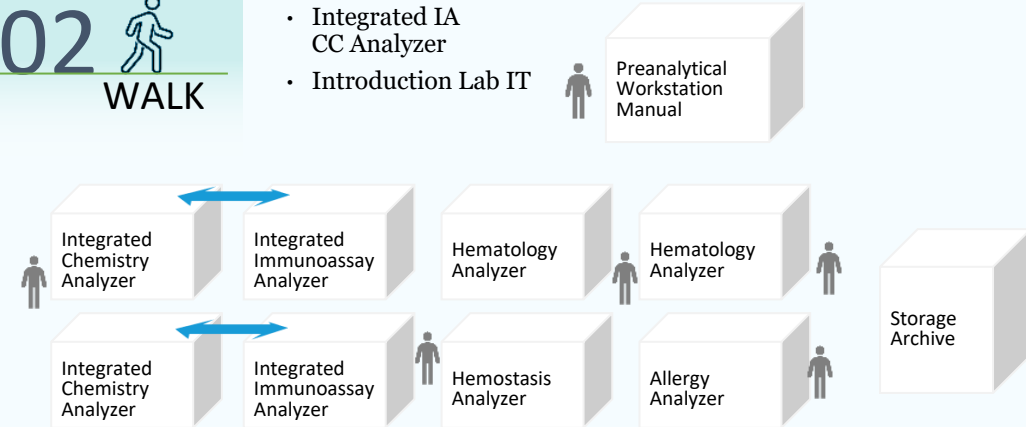
01 CRAWL

- Manual Operation
- Standalone Analyzer
- Labour Intensive



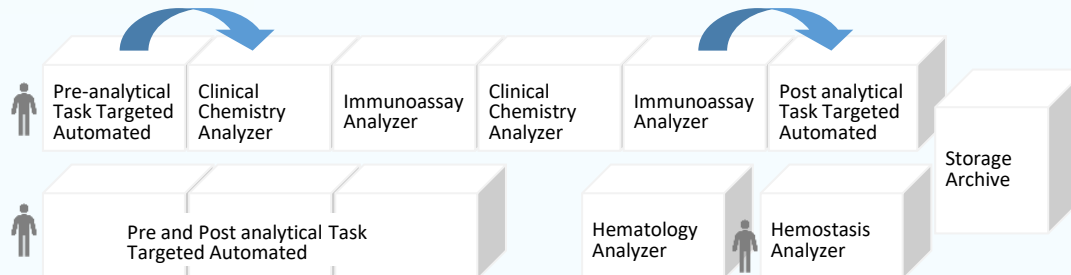
02 WALK

- Integrated IA CC Analyzer
- Introduction Lab IT



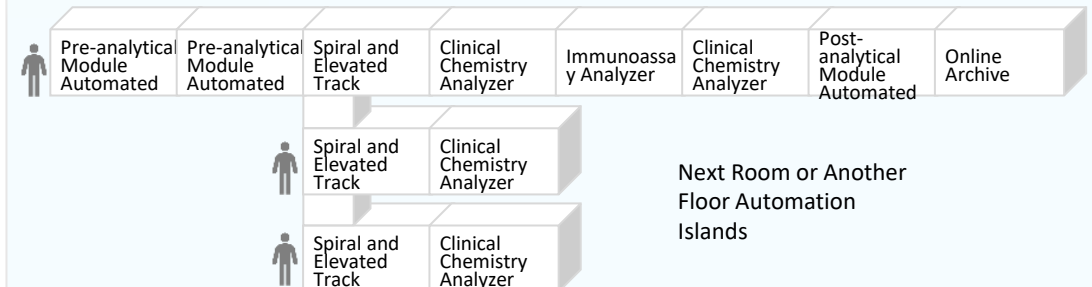
03 RUN

- Task Targeted Automation
- Focus on Bottleneck
- Automate - Manual Error Prone Steps
- Discipline Antagonistic
- Comprehensive IT with auto verification



04 FLY

- E2E Total Lab Automation
- Multidisciplinary
- Comprehensive IT with auto verification



THE APOLLO CRL STORY



Apollo Chennai - Digi-Smart Lab – India Largest Zero Human Touch e2e Multidisciplinary Automation

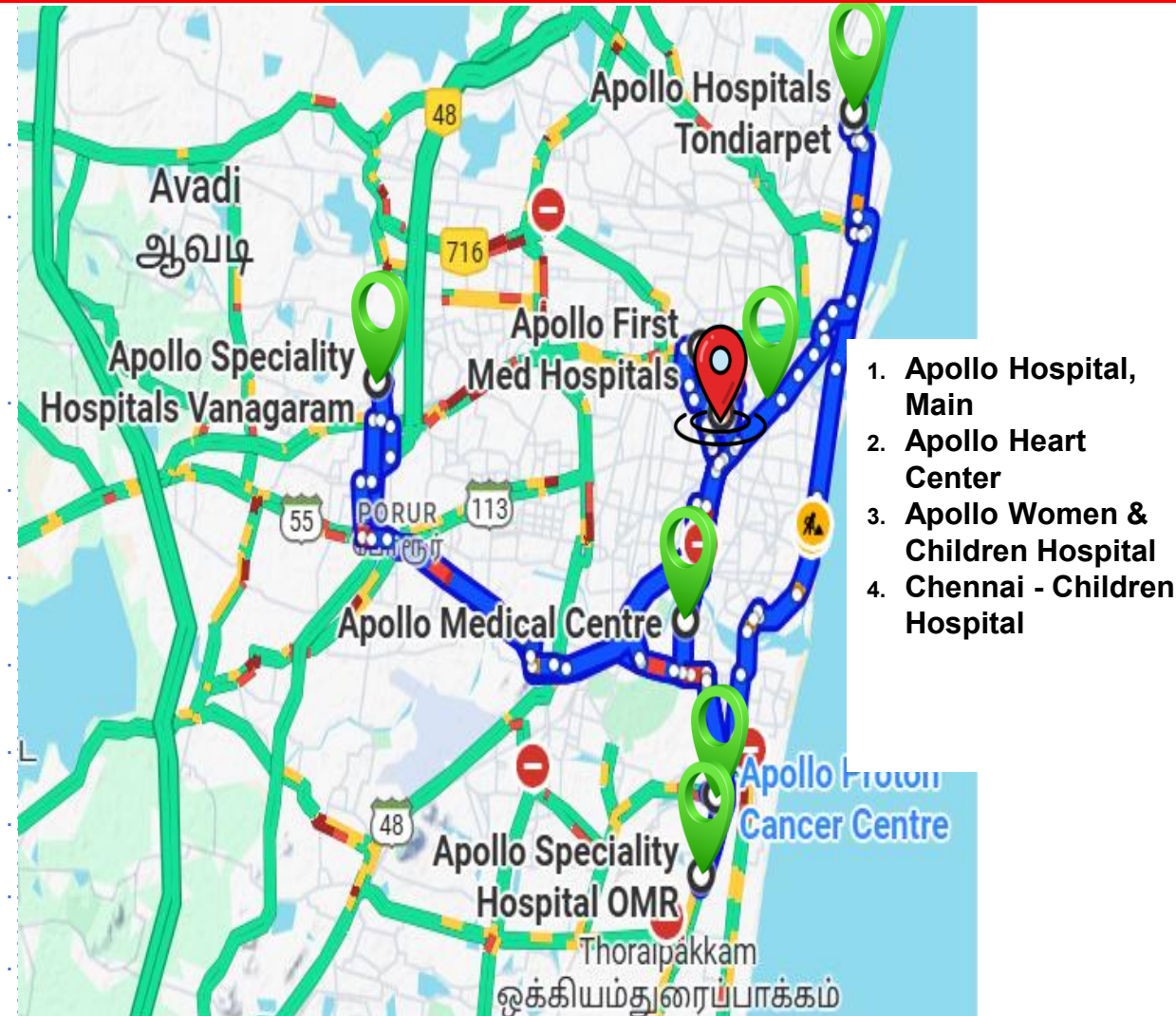


Apollo Labs & Hospitals – Cluster Consolidation

All locations within a 50 min distance of Central Reference Lab



Hospital Name		Bed size	Distance from CRL Google Maps	Time in mins* @ Peak Google Maps
AHLL, Central Reference Lab (CRL)		NA	0	0
Flagship Apollo Hospital (AH), Main		736	1	5-10 mins
Apollo Heart Centre				
Apollo Women's Hospital				
Apollo Women & Children's Hospital				
AH, Tondiarpet		60	12	40 mins
Apollo Cancer, Teynampet		300	4.5	15 mins
Apollo Speciality, OMR		118	14.1	37 mins
Apollo Speciality, Vanagaram		300	14.6	50 mins
Apollo Proton, Tharamani		150	12.6	31 mins
Apollo First Med, Kilpauk		80	4.2	11mins
Kotturpuram (New)		NA	6.8	18 mins
Outside Chennai (Madurai, Karur, Nellore, Trichy) Specialized tests		NA	NA	NA



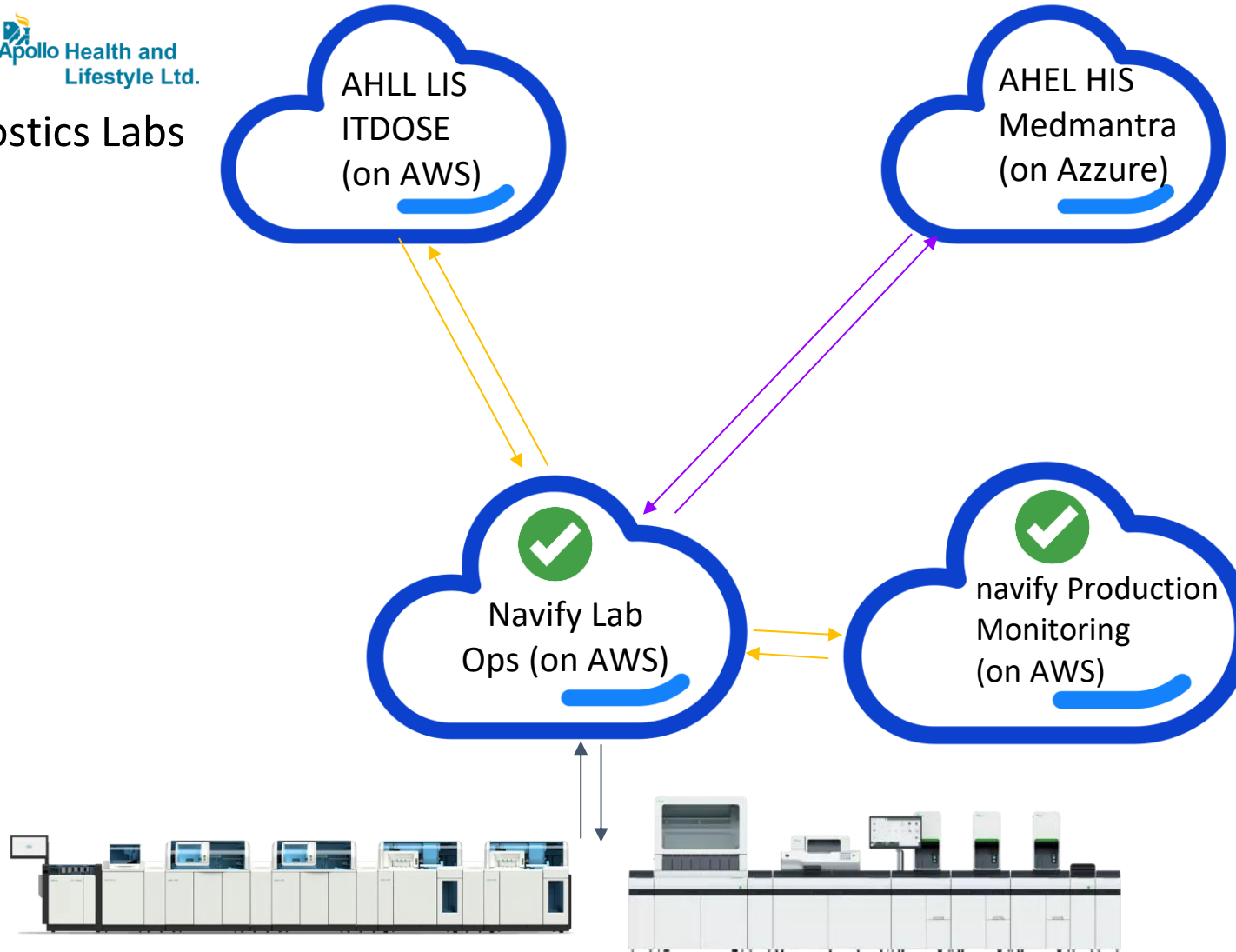
APOLLO : Informatics



Apollo Diagnostics Labs

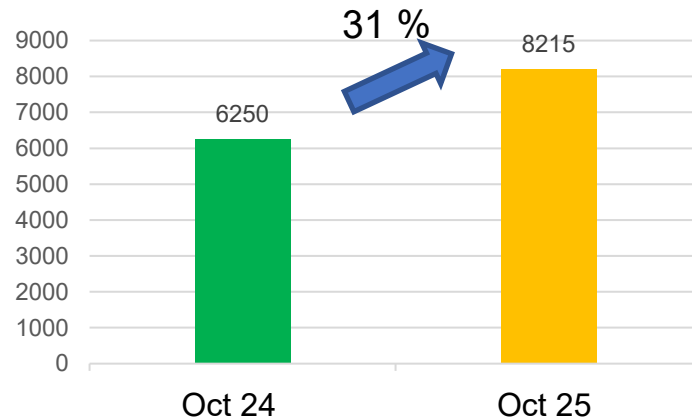


Apollo Hospitals

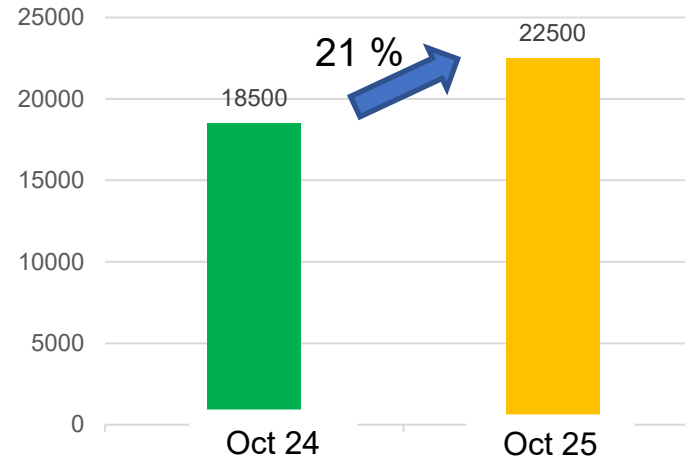


Before & After Digi Smart Lab: Workload Comparison

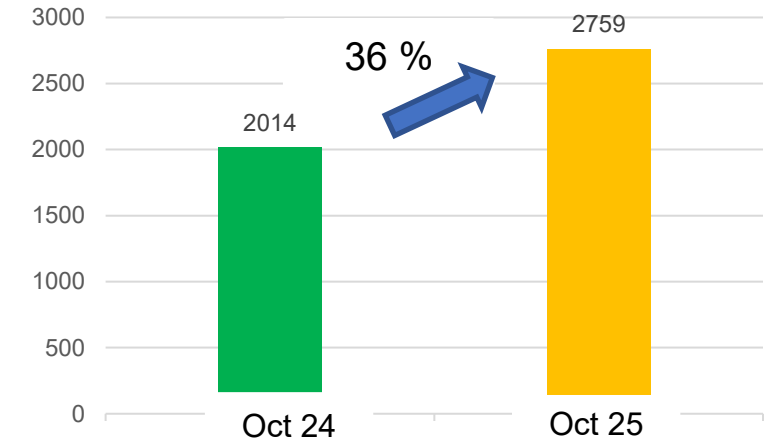
Biochemistry Sample Tubes
(Oct 24 vs 25)



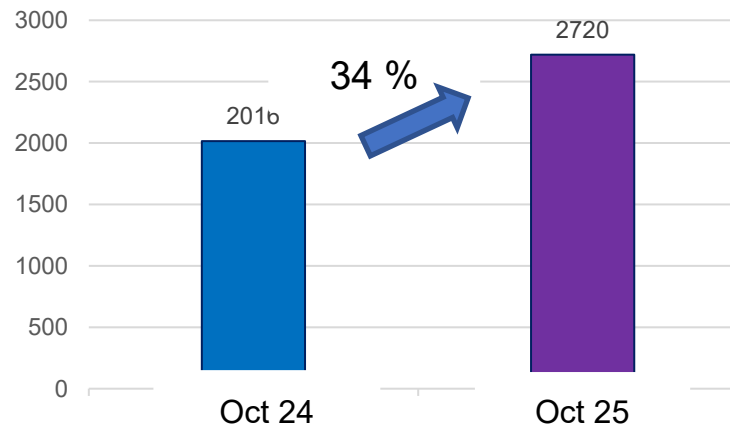
Clinical Chemistry Test
(Oct 24 vs 25)



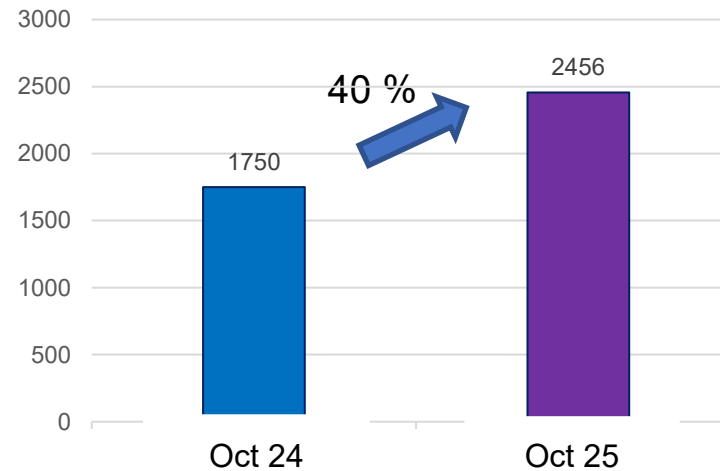
Immunoassay & Serology Test
(Oct 24 vs 25)



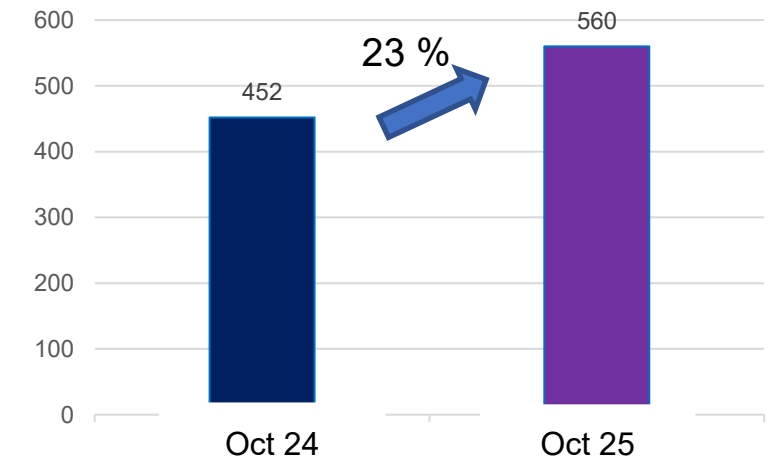
Hematology Sample Tubes
(Oct 24 vs 25)



CBC (Oct 24 vs 25)

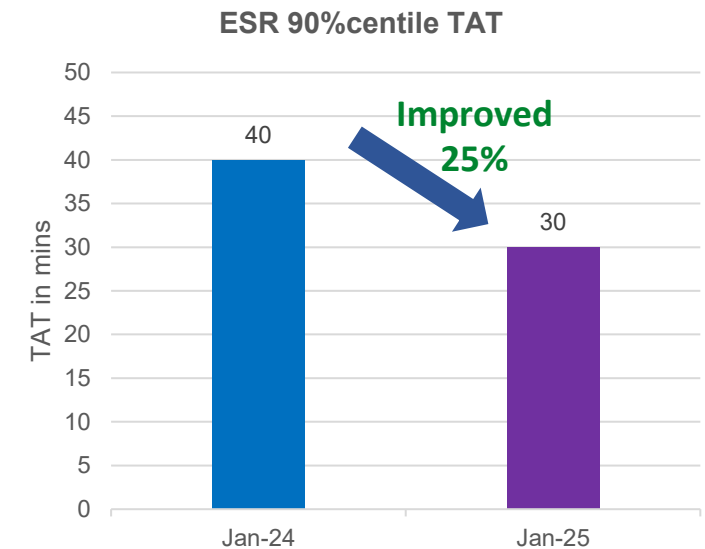
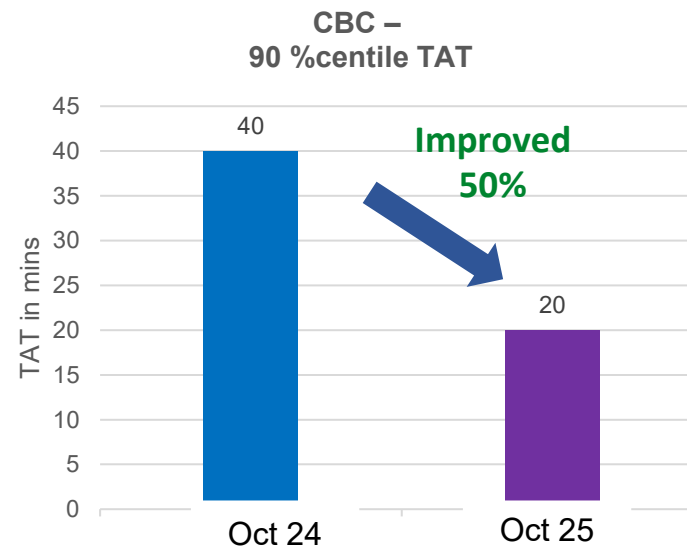
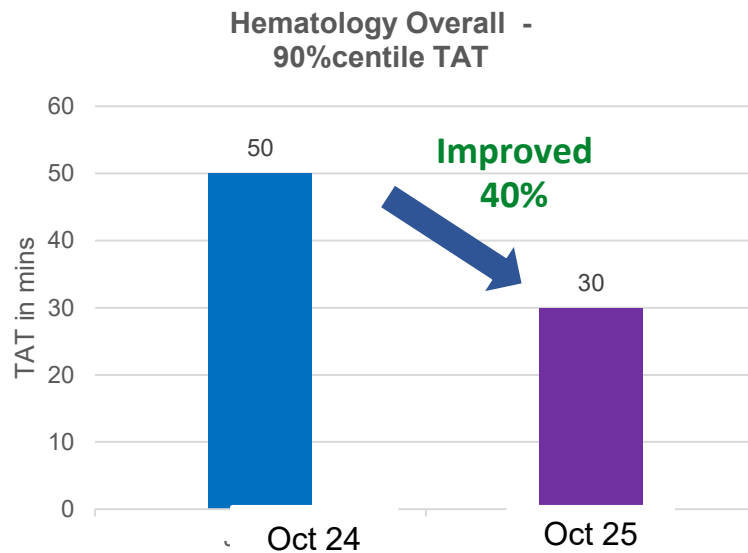
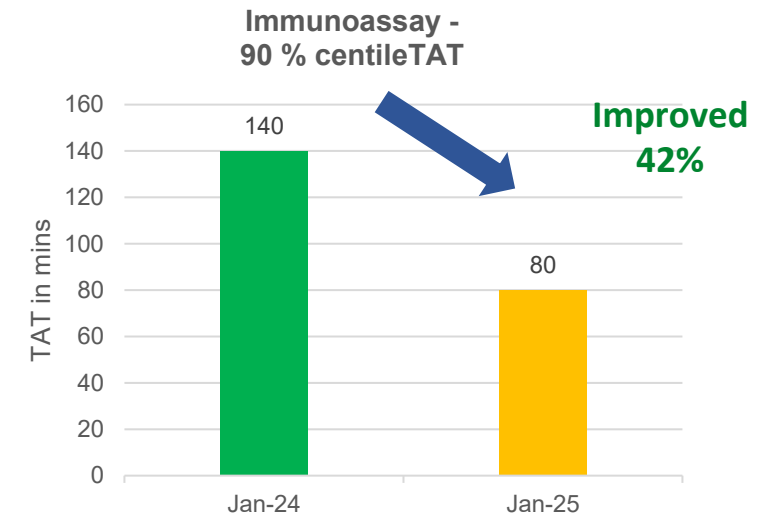
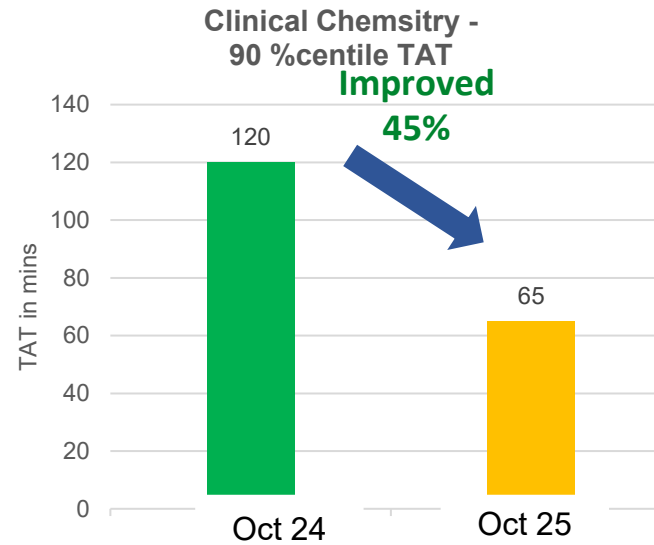
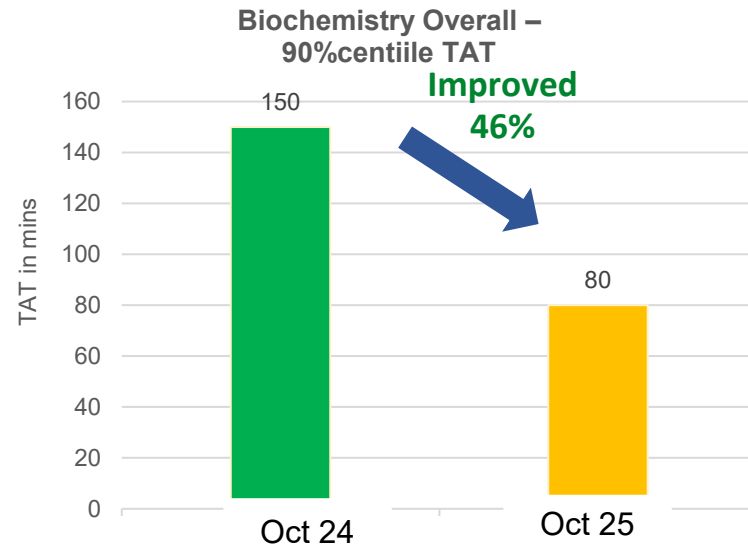


ESR (Oct 24 VS 25)



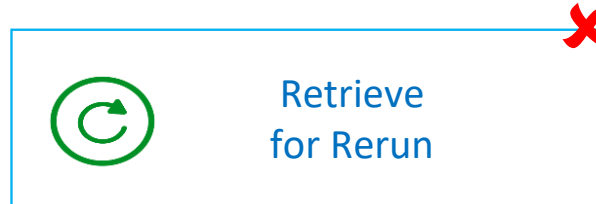
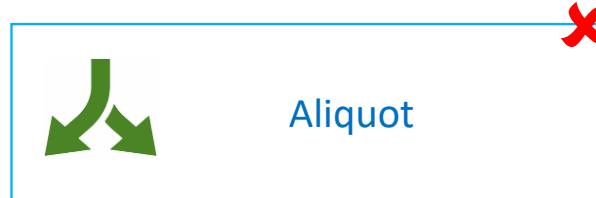
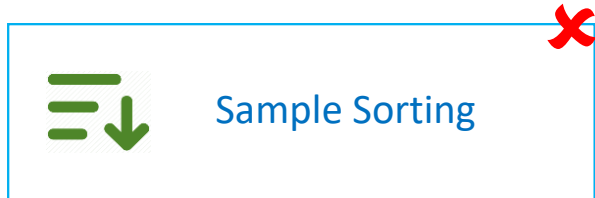
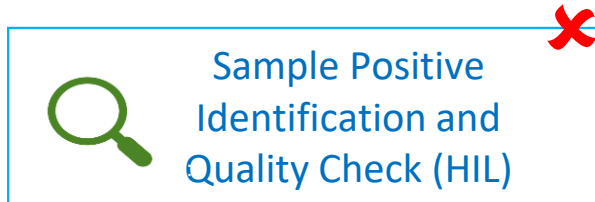
Before & After Roche Automation: Improvement TAT in mins (Analytical TAT)

Analytic TAT : From Specimen Recd to Preliminary Validation – All within the 90 min target

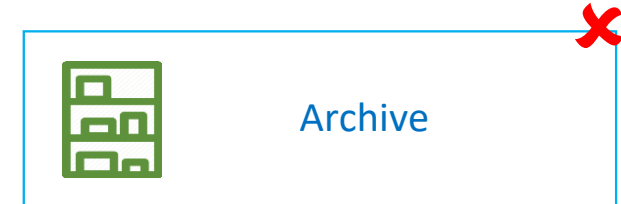
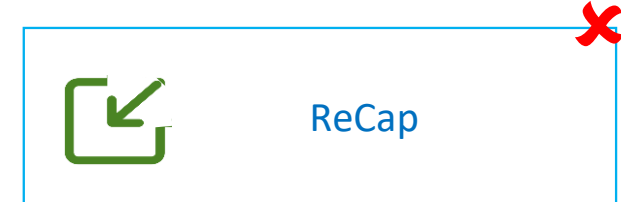


Steps & Potential Errors Eliminated with Digi Smart Automation

6 Main and 14 sub Pre-Analytics Steps



3 Main and 12 sub Post-Analytics Steps



- **9 main steps and 26 Sub steps eliminated** with Roche automation and navify[®] Lab ops
- A total of **52** associated **potential errors eliminated**

Success story to continue with many more milestones like

- ✓ **Cost efficiency,**
- ✓ **Staff satisfaction,**
- ✓ **Risk reductio,**
- ✓ **Zero error,**
- ✓ **Competition leverage....**



Vision

Doing now what patients need next

Our Zero Touch e2e
Multidisciplinary Automation & Digital Solution ,CRL, Chennai

